



Jackson County Medical Care Facility

12/23/2018

Mission Statement: Our mission is to enhance the quality of life of our Residents. Our diverse and engaged CarePartners are committed to providing an enriched, caring environment. Through a person directed culture, we exceed expectations.

Vision Statement: Providing a community where Residents engage their hearts, minds and souls.

*The Perfect Attendance Award
for pay period ending December 23, 2018 goes to:*

**Kassondra Forner
Dietary Aide**



*The Perfect Attendance Award
for pay period ending January 6, 2019 goes to:*

**Nicole Carlisle
ESD**



**Mandatory Computer-Based In-Services for January
The Healthcare Academy in-services due
by 1/31/19 are as follows:**

All Staff:

- 1. Hand Hygiene**
- 2. Isolation Precautions: A lesson in Infection Control**
- 3. Fire Safety**
- 4. Quality Improvement Desktop message board**

**MANDATORY FOR:
C NA's and NURSES**

- 1. Sepsis- Stop and Watch**

**MANDATORY FOR :
WHISPERING WILLOWS**

- 1. Module 1: Understanding the world of Dementia**

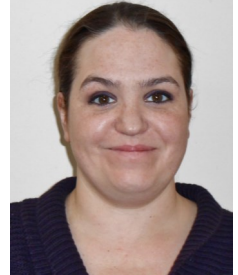
<https://www.healthcareacademy.com/student-login/>

Login example: John

Doe 1234

(name & last 4 digits of social security number)

Care Partner Of the Month



Congratulations to Andrea Moull, Certified Nursing Assistant, our Care Partner for the month of January, 2019.

Andrea has worked at JCMCF for 4 years, she was referred by a friend who worked here as well and fell in love with the facility and residents.

Andrea was born in Cambridge, Ohio then moved to Concord at the age of 7 with her family for a better opportunity with life.

When she isn't working, she enjoys spending time with her family and her two children. Her favorite hobbies are painting, cooking and baking.

Andrea has taken two trips to the U.P. and Chicago and fell in love with both places, she would love to visit New Zealand or Finland.

Andrea has two dogs; Nikki a German Shepard and Ellie a Chow mix. Both are rescue dogs.

The most rewarding thing that has happened to Andrea as an employee of JCMCF is creating the bond with our residents.

Thank you, Andrea, for your devotion and care to our residents. We're so glad you're here!

Welcome December CarePartners!

- Rebecca Davis- C NA
- Lucille Reynolds- ESD
- Jade Smith- C NA
- Cynthia Girlish- RN
- Alisha Stewart- C NA

Welcome January CarePartner!

- Barbara Funches- ESD

TAX FORMS

Any CarePartner who submits a tax form (W-4) change must complete all fields (i.e., name, address, social security number, # of exemptions, marital status, signature and date). Forms are available on the rack in the back hallway.

Your form cannot be honored unless all of the boxes have been completed.

With tax season upon us, W-2 forms will be the focus in January. As required by law, HR will have W-2 forms available for our CarePartners by January 31, 2019.

See Human Resources with questions.

FLEXIBLE SPENDING ACCOUNTS

For any employees with a Flexible Spending Account:

Your request for reimbursement must be turned in to HR by 3 pm each Wednesday to be considered for payment on Thursday. The check will be available at 2 p.m. each Thursday. Please note, reimbursement checks are not mailed. You must stop in the HR office to pick up. Questions?

Please see Human Resources.

ATTENTION CNAs: You are responsible for keeping track of the expiration date of your license. If you move, it is your responsibility to call Prometric (800-748-0252) and provide them with your new address. Prometric will not forward your renewal form to your new address unless you notify them of your changes. When you receive your renewal in the mail please bring it in to Arizona Kettle for processing.

Another fresh new year is here . . .

Another year to live!

To banish worry, doubt, and fear,

To love and laugh and give!

This bright new year is given me

To live each day with zest . . .

To daily grow and try to be

My highest and my best!

I have the opportunity

Once more to right some wrongs,

To pray for peace, to plant a tree,

And sing more joyful songs!

-William Arthur Ward-

Work Word of the Day | LetsTalkAboutWork.tv



GoIng To ScHoOL??

Did you know JCMCF has a Tuition Reimbursement Program?

It is available for those employees entering (or continuing) a course of study that must be directly related to the future benefit of the Facility.

Please see your Supervisor or HR for more info.

\$\$\$ \$ \$ DIRECT DEPOSIT \$ \$ \$ \$ \$

This is a reminder that it is your responsibility to contact Human Resources if you make any changes or close a bank account you have money going into via direct deposit. Failure to do so will result in HR having to receive the money back from "cyberspace" before your check can be reissued, and that can take up to one week. Please contact Human Resources with questions or concerns.